

**South Bend Signal Company**  
**Large Scale Cantilever Signal Bridge**  
**Order and Specification**

Name: \_\_\_\_\_  
 Address: \_\_\_\_\_  
 Phone: \_\_\_\_\_  
 E-Mail: \_\_\_\_\_

Total Amount Enclosed \$ \_\_\_\_\_

Number of Bridges: \_\_\_\_\_

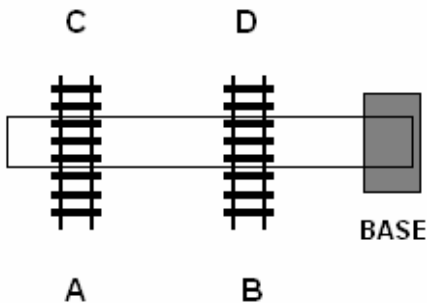
Bridge Color: Black \_\_\_\_\_ Silver \_\_\_\_\_

Place an X in the boxes that apply. See Chart for signal type

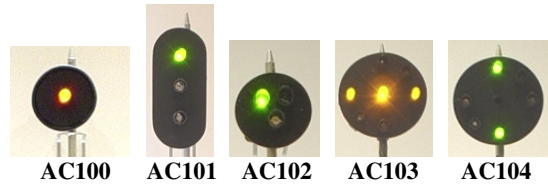
**Specifications Chart**

Signal Type (see Chart)	A	B	C	D	Price Each	Total
AC100					\$25.00	
AC101					\$25.00	
AC102					\$25.00	
AC103					\$25.00	
AC104					\$25.00	
Cantilever Bridge	-	-	-	--	\$100.00	
Shipping	-	-	-	--	\$10.00 for the 1 <sup>st</sup> and \$5.00 for each additional bridge	
Total Cost	-	-	-	--		

**View of bridge from the TOP:**



**Signal Types**



**Instructions**

[1] Fill in the top section completely: name, address, phone, and e-mail if you have one as well as the number of bridges and bridge color.

[2] If you are ordering more than 1 bridge with the same specifications fill in the number of bridges you are ordering and multiply the total cost by the number of bridges and enter this amount in the line "Total Amount Enclosed".

[3] Fill in the Specifications Chart using the View from the top and Signal Types as a reference. Place an (X) in each box that applies for A, B, C, and D for signal type.

[4] Carry the total boxes marked (X) with the price and place the result in the total column. Make a total of the total column and place the result at the top as (Total Amount Enclosed).

[5] Shipping: \$10.00 for 1 bridge. For more than 1 bridge add \$5.00 each  
 Send check or money order to:

**South Bend Signal Company**  
 2303 Creek Rd.  
 Niles, MI 49120

Thanks,  
**Jim Leslie South Bend Signal Company**