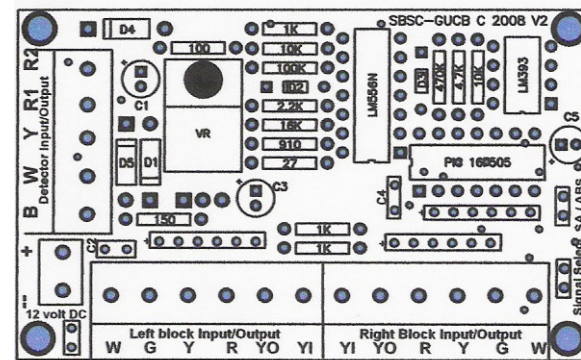


South Bend Signal Company, LLC

“Making Your Railroad Real”

www.sbsignal.com

LDSB-C for Crossing Signals



LDSB-C Manual

© 2008

Step [6] Wiring the Crossing Bell Cabinet

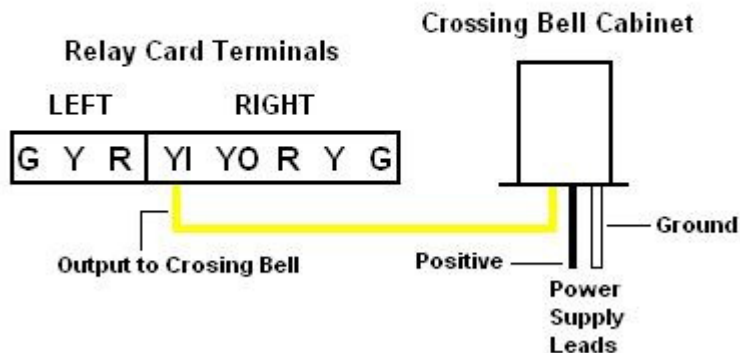
The Crossing Bell cabinet uses the same power source as the relay card in the Relay Cabinet (12-18 volt DC). The **black** wire from the crossing bell cabinet is connected to the + (positive power supply lead. The **white** wire is connected to the - (ground) power supply lead.

There are two sets of input/output terminals on the relay card. A **left** and **right** set. The **LI** on the **right** set is connected to the **yellow** wire from the crossing bell cabinet.

Use wire the nuts wire nuts provided placing a small amount of dielectric grease in each nut before screwing them on the wires.

Mount the crossing bell cabinet close to the relay cabinet so that the wires can be connected between the relay cabinet and the crossing bell cabinet. Use the drill jig provided to drill the necessary hole to mount the choosing bell cabinet to the same board as the relay cabinet. The power connections from the crossing bell cabinet can be directly connected to the relay cabinet's power terminals (+ -).

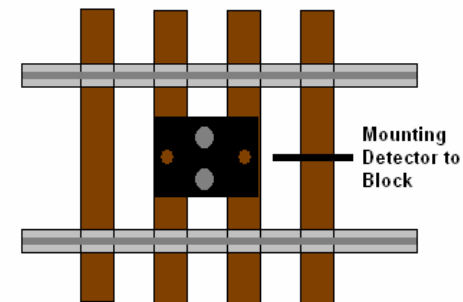
Crossing Bell Cabinet Connections



Step [2] Mounting Detectors

After establishing the Grade Crossing block for your layout, one detector is mounted at each end of the block. See **Figure 3**. To mount the detectors remove ballast between the two ties closest to the mounting area. Insert a detector between the ties so that the mounting holes are over the two adjacent ties and the wires from the detector are between the ties. Pull the detector wires to the side of the track. Place a mark on each tie for the mounting holes on the detector. Use a 3/32nd inch drill and drill holes in the marked positions. Use two 1/2 inch screws (provided) and fasten the detector to the ties. See Figure 4. If you have a double track main at the grade crossing connect two additional detector sets to the second set of rails as described above.

Fig.4



Step [3] Installing the Relay Cabinet

The Relay cabinet should be positioned close to the grade crossing by the crossing signals. The Crossing bell cabinet should be placed close to the relay cabinet so that the wires from the crossing bell cabinet can be connected to the relay cabinet board as described in **STEP [6]**.